



MT™ Tooling System

FOR HIGH PERFORMANCE PUNCH PRESSES

MT™ TOOLING

HIGH PERFORMANCE MT TOOLING DESIGNED FOR IMPROVED PRODUCTIVITY

- High Speed Steel punches for superior edge wear resistance
- Near polished punch flanks with 1/4 degree back taper eliminates galling
- Superior compatibility with Mate manufactured multi tool assemblies
- Close stripper to punch clearance for superior alignment
- Highly wear resistant die steel for exceptional strength
- Slug Free® Die geometry eliminates slug pulling for improved hole quality
- SuperMax™ & Maxima® coating available on punches for extended tool life



MT 8MM

Maximum 0.315(8.00)
diameter/diagonal



Punch

Round **PAFY0A**
Shape **PAFY_A**

Stripper

Round **S6FY0A**
Shape **S6FY_A**



Slug Free Die

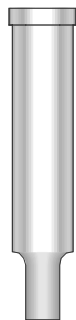
Round **DOFY0A**
Shape **DOFY_A**

Shims

20 Each: **MSFY**
0.004(0.10)
0.006(0.15)
0.008(0.20)
0.024(0.61)

MT 16MM

Maximum 0.630(16.00)
diameter/diagonal



Punch

Round **PAFX0A**
Shape **PAFX_A**

Stripper

Round **S6FX0A**
Shape **S6FX_A**



Slug Free Die

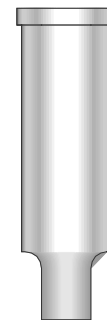
Round **DOFX0A**
Shape **DOFX_A**

Shims

10 Each: **MSFX**
0.004(0.10)
0.006(0.15)
0.008(0.20)
0.024(0.61)

MT 24MM

Maximum 0.945(24.00)
diameter/diagonal



Punch

Round **PAFZ0A**
Shape **PAFZ_A**

Stripper

Round **S6FZ0A**
Shape **S6FZ_A**



Slug Free Die

Round **DOFZ0A**
Shape **DOFZ_A**

Shims

8 Each: **MSFZ**
0.004(0.10)
0.006(0.15)
0.008(0.20)
0.024(0.61)

MT TOOLING STRIPPER AND DIE PULLER TOOLS



NMOYK

MT 8mm Stripper and Die Puller Set— (includes stripper and die puller, magnet pen and retrieving tool)

NMOXK

MT 16mm Stripper and Die Puller Set— (includes stripper and die puller and magnet pen)

NMOZK

MT 24mm Stripper and Die Puller Set— (includes stripper and die puller and magnet pen)

NMOOK

Complete Kit for MT Tooling— (includes 8mm, 16mm and 24mm stripper and die puller sets)

GENERAL ADD-ONS

Radius Corner	no charge	
Special Angle Settings	Add	stripper and die
SMALL DIAMETER ROUND TOOLS		
Diameter 0.031(0.79) to 0.061(1.55)	Add	to punch, stripper, and die
Diameter 0.062(1.56) to 0.092(2.34)	Add	to punch, stripper, and die
NARROW WIDTH SHAPED TOOLS		
Widths under 0.125(3.18)	Add	to punch, stripper, and die
MAXIMA OR NITRIDE		
MT 8mm, MT 16mm, MT 24mm	Add	to punch
SUPERMAX		
MT 8mm, MT 16mm, MT 24mm	Add	to punch

STANDARD SHAPES (NUMBERING INDICATES SHAPE CODE):

rectangle square quad "D" round hexagon octagon oval single "D" double "D" triangle diamond



:" | +7.910.790.39.51 | info@mltech.ru | www.mltech.ru (Dimensions in Inches (mm))

